

# great lakes REPORTER

A publication of the American Public Works Association – Michigan Chapter • Vol 117 • No 1 • Spring 2017



**2017 Great Lakes Expo**

**Southwest Branch Honors Projects  
and Public Works Professionals**

**Michigan Leaders Develop  
First Public Works Academy**



# Hubbell, Roth & Clark, Inc.



## WHO IS THE REPRESENTATIVE FROM YOUR COMPANY THAT APWA MEMBERS SHOULD CONTACT?

Charles E. Hart, P.E., Vice President

## BRIEF COMPANY HISTORY:

Founded in 1915 by Clarence W. Hubbell, the engineering firm of Hubbell, Roth & Clark, Inc. began a journey that would take the small engineering firm from humble beginnings in downtown Detroit, to a leading consulting engineering firm with six offices throughout the state of Michigan.

Faced with designing a solution to combat the staggering number of deaths attributed to Typhus and other water borne diseases, George Fenkell, commissioner of public works for the City of Detroit, soon retained Hubbell to review a survey on the pollution of the Detroit River and provide recommendations. Although Hubbell presented detailed plans in 1916 for treating the raw sewage that had been discharged into the Detroit River, it would take 23-years for the City to enact his recommendations.

Today, the resulting Detroit Wastewater Treatment Plant designed and completed by HRC, is recognized as one of Michigan's Top Ten Civil Engineering Outstanding Achievements of the 20th century. HRC's early reputation for providing innovative solutions to complex engineering challenges paved the way for the firm to emerge as one of the leaders in designing many of the major infrastructure projects for the City of Detroit. The Detroit, HRC partnership has continued to grow and strengthen into the 21st century.

World War II brought with it new engineering requirements, with HRC answering the call through the design and implementation of sanitary and industrial wastewater plants for a number of facilities including: Selfridge Airbase, Chrysler Tank Arsenal and the Ford Willow Run Bomber Plant.

The boom following the war presented an opportunity for the development of new production and testing facilities throughout our state. HRC counts the General Motors Proving Grounds in Milford, the General Motors Technical Center in Warren and the Ford Motor Company complex in Monroe, among its many notable projects.

As the company expanded, HRC added services to meet regional needs by designing municipal drains, interceptors and collection systems to prevent the flow of polluted discharges into lakes and rivers and eliminate neighborhood flooding. As the population of Southeast Michigan rose by more than 200,000 from 1975 to 2005, HRC embraced emerging technology and developed expertise in roadway design and structural engineering to accommodate the need for improved road networks and bridges.

With the strength of more than 200 employees and offices in Bloomfield Hills, Detroit, Grand Rapids, Howell, Delhi Township and Lansing, HRC is proud of its unwavering service to municipal, industrial and private clients. The company has retained ownership throughout its more than 100-year history and descendants of its founders are still leaders in the firm.

## COMPANY PROFILE/SERVICES OFFERED:

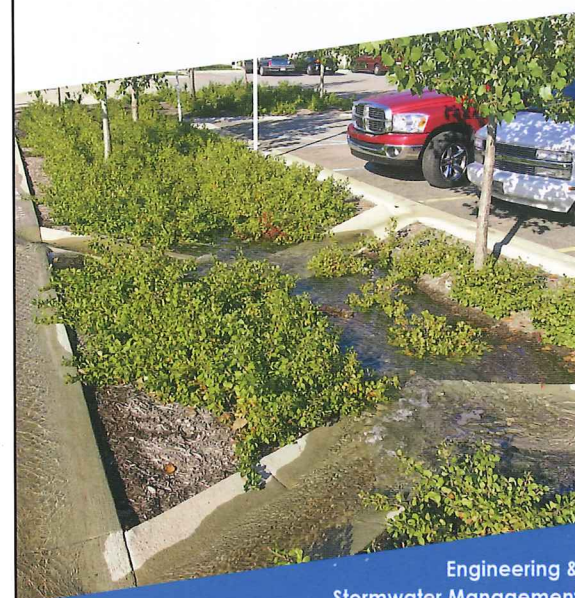
HRC is a multi-disciplined consulting engineering firm with capabilities in the following areas:

- Road & Bridge Design
- Site/Civil Engineering
- Surveying
- Traffic Engineering
- Environmental Engineering
- Wetlands/Watershed Management
- Landscape Architecture
- Structural Engineering
- Process Engineering
- Instrumentation & Control
- GIS
- Asset Management
- Water Transmission and Treatment
- Construction Services/Material Testing
- Industrial Facilities Design
- Wastewater Treatment Plants
- Combined Sewer Overflow Retention & Treatment
- Sanitary Sewer Systems
- Easement/Right-of-Way Services
- Architectural Services

## WHAT MAKES THE APWA-MICHIGAN CHAPTER A GREAT ORGANIZATION TO BE INVOLVED IN?

Aside from the educational opportunities, the networking is one of the greatest aspects of APWA Michigan. This has become a great group of Public Works Professionals who work together and act as one community with a common goal to improve all aspects of Public Works. This includes sharing information and lessons learned, as well as new technologies and equipment. In the end, this all helps promote the value of public works and the stresses the need to maintain and improve our infrastructure.

**FLEIS&VANDENBRINK**  
DESIGN. BUILD. OPERATE.



800.494.5202  
www.fveng.com

Engineering &  
Stormwater Management  
Dam Inspections  
Drain Assessments  
Survey & GIS  
Environmental



**Bandit**  
INDUSTRIES, INC.

VIDEOS • PHOTOS • FORUMS • PRODUCT INFORMATION  
AVAILABLE WITH THE CLICK OF A MOUSE!

www.youtube.com/banditchippers  
www.banditchippers.com



Hot  
inPlace  
RECYCLING

How do you resurface an aging road, protect the environment, plus save time and money?

**Call Gallagher.**

We'll show you how to dramatically reduce your pavement resurfacing program's budget, and do your part to help protect the environment.

Hot-in-Place Recycling is not only a very green process that reduces the carbon footprint by 28% versus mill & overlay, it also reduces congestion and user delays with far less trucking required.

**GALLAGHER**  
ASPHALT

Gallagher Asphalt Corporation  
18100 S. Indiana Avenue  
Thornton, IL 60476  
800.536.7160

hotinplacerecycling.com



## Member News

### Hubbell, Roth, & Clark, Inc. Announces New Leadership



Mitchell



Faught



Hart

Hubbell, Roth & Clark, Inc. (HRC) is proud to announce Daniel W. Mitchell, P.E., has been named President, Nancy MD Faught, P.E. has been named Executive Vice-President and Charles E. Hart, P.E. has been named a Vice-President of the Firm effective January 2017. These announcements come on the eve of the retirements of President George E. Hubbell, P.E. and Executive Vice-President Thomas E. Biehl, P.E.

"You simply don't replace 65 years of combined leadership overnight," Mr. Mitchell commented when asked about the retirements. "However, HRC is blessed with many talented people that includes our Board of Directors, staff and clientele. With these people and the fundamental proven approach to conducting business intact, I am confident this

company will continue to provide excellent engineering services as it has for over 100 years."

Mr. Mitchell is a registered Professional Engineer and has a bachelor's degree in Mechanical Engineering from Lawrence Technological University. He has been with HRC since 1990 and serves as Principal In-Charge of all of HRC's field services. Mr. Mitchell is the primary contact for the Cities of Livonia, Pontiac, Rochester Hills and Southfield; the Villages of Beverly Hills and Bingham Farms; and the Office of the Oakland County Water Resources Commissioner.

With over 28-years of experience, Ms. Faught's work has largely focused on various transportation and multi-discipline projects. Ms. Faught has a bachelor's degree in Civil Engineering from Michigan State University and is a registered Professional Engineer. She serves as an active member of American Public Works Association and Michigan State University's Department of Civil & Environmental Engineering Professional Advisory Board.

Mr. Hart joined HRC in 1998 and currently leads the Road Design Department. He is highly experienced in road, stormwater and utility design, and project management. Mr. Hart has a bachelor's degree in Civil and Environmental Engineering from the University of Michigan and is a registered Professional Engineer.

## Branch News

### Detroit Metro Branch

On January 19, the Detroit Metro Branch held its branch meeting at Pasquales in Royal Oak. Almost 40 people were in attendance to listen to Mark McCulloch of the Washtenaw County Road Commission discuss the commission's roundabout education campaign. The focus of the campaign is to reduce common non-injury crashes that occur at roundabouts in Washtenaw County and across the U.S. The two most prevalent crashes are failure to yield at entry and turning from the wrong lane of a multilane roundabout. The Road Commission has partnered with local law enforcement agencies, driving professionals, school districts and local radio stations to achieve a successful outcome.

### Northern Branch

Michigan APWA's Northern Branch had 15 people in attendance at its Executive Board Meeting on February 2 at The Evergreen Resort in Cadillac. At the meeting they had a discussion about the U.P. splitting off and John Thompson led a discussion on boundaries. They also announced that the Northern Branch Equipment Show will be held the first Thursday after Labor Day. The next Northern Branch meeting will be held Tuesday, May 2nd.

### Downriver and Detroit Metro Joint Meeting

The Downriver and Detroit Metro branches held a joint meeting February 16 at Atwater Brewery in Detroit where they had 65 people in attendance. The two branches have a joint meeting each February with Downriver hosting on the odd years and the Metro Branch hosting on the even years. At the meeting John LaMacchia gave an update on things going on in Lansing that can affect the groups.

Infrastructure continues to be a priority for the Governor. The 21st Century Infrastructure report released in November of last year highlighted four areas where increased investment is needed, Transportation, Water, Energy and Communications. The annual investment gap is approximately \$4 billion and the gap exceeds \$60 billion over the next 20 years. To fill this gap, the report suggests potential solutions that include a mix of increasing federal and state funding, providing local funding options, additional user fees and private investment.

Early efforts though will focus on the creation of a more robust statewide asset management system and coordinated planning across different types of infrastructure. Other areas that will receive attention over the next few months will include the development of a new lead and copper rule, continued efforts to ensure Michigan is a leader in the development of autonomous vehicles and the expansion of public private partnerships on certain state projects.

**Bell** *Since 1951*  
**Equipment Company**

## Michigan's Environmental Equipment Headquarters

**MiDEAL CONTRACT NO. 071B7700091**



**SALES • SERVICE • PARTS • RENTALS**



**WWW.BELLEQUIP.COM**

**PH: 248.370.0000 Toll Free: 866.597.0716**